

## **Housing Authority of the City of Blue Ridge - GA06RD00062**

### **1980's Site - 002 = 463 Industrial Blvd., 55 Ouida St. and 30 Ouida St. Locations**

### **30 Apartments and 2 Non-Dwelling Office/Community Room and Maintenance Bldg.**

**1-Bdrm. Apartment Quadraplex - Elderly**

(4) Apartments located at 30 Ouida St.

**"TYPE A/E" = 638 SQ. FT.**

**1-Bdrm. Apartment Triplex- Elderly**

(6) Apartments located at 30 Ouida St.

**"TYPE B/E" = 638 SQ. FT**

**1-Bdrm. Apartment Quadraplex - Regular**

(4) Apartments located at 30 Ouida St.

**"TYPE C" = 638 SQ. FT**

**2-Bdrm. Apartment Duplex**

(6) Apartments located at 55 Ouida St.

**"TYPE D" = 828 SQ. FT**

**3-Bdrm. Apartment Duplex**

(6) Apartments located at 463 Industrial Dr. and 30 Ouida St.

**"TYPE E" = 1,204 SQ. FT**

**4-Bdrm. Apartment Duplex**

(4) Apartments located at 463 Industrial Blvd.

**"TYPE F" = 1,311 SQ. FT**



Capital Improvement LOG

Housing Authority of the City of Blue Ridge - GA06RD000062

Site location 002 - 1982

Roads/Parking

7,352 Sq. Ft.

Concrete

3,151 Sq. Ft.

| 463 Industrial Blvd. Address | Apt # | S.Detector | Roofs | HVAC | W.H.       | Flooring | Kitchen | Bathroom | Range      | Refrig.    | Windows | Insulation |
|------------------------------|-------|------------|-------|------|------------|----------|---------|----------|------------|------------|---------|------------|
| 463 Industrial Blvd.         | A-1   | 2019       | 2019  | 2009 | 2010-01-08 | 2005     | 2002    | 2006     |            |            | 2002    | 2005       |
| 463 Industrial Blvd.         | A-2   | 2019       | 2019  | 2009 | 2007-10-08 | 2005     | 2002    | 2006     |            |            | 2002    | 2005       |
| 463 Industrial Blvd.         | B-1   | 2019       | 2009  | 2009 | 2023-04-24 | 2005     | 2002    | 2006     | 2023-04-05 |            | 2002    | 2005       |
| 463 Industrial Blvd.         | B-2   | 2019       | 2009  | 2009 | 2023-04-24 | 2005     | 2002    | 2006     |            | 2018-09-11 | 2002    | 2005       |
| 463 Industrial Blvd.         | C-1   | 2019       | 2019  | 2009 | 2023-05-12 | 2005     | 2002    | 2006     |            |            | 2002    | 2005       |
| 463 Industrial Blvd.         | C-2   | 2019       | 2019  | 2009 | 2011-02-11 | 2005     | 2002    | 2006     |            |            | 2002    | 2005       |
| 463 Industrial Blvd.         | D-1   | 2019       | 2009  | 2009 | 2015-09-15 | 2005     | 2002    | 2006     | 2021-02-11 |            | 2002    | 2005       |
| 463 Industrial Blvd.         | D-2   | 2019       | 2009  | 2009 | 2012-10-06 | 2005     | 2002    | 2006     |            |            | 2002    | 2005       |

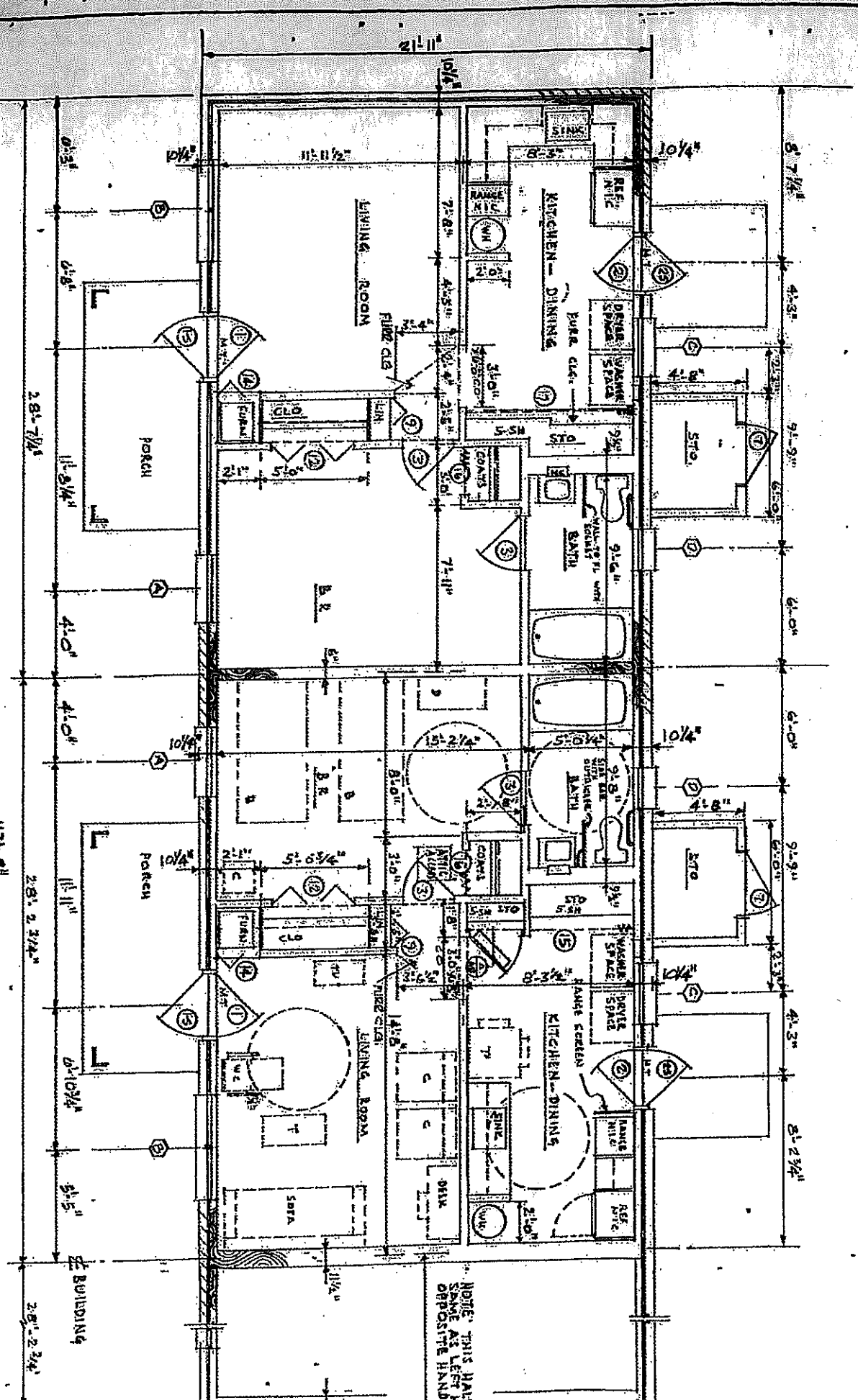
| 55 Ouida St. Address | Apt # | S.Detector | Roofs     | HVAC | W.H.       | Flooring | Kitchen | Bathroom | Range      | Refrig.    | Windows | Insulation |
|----------------------|-------|------------|-----------|------|------------|----------|---------|----------|------------|------------|---------|------------|
| 55 Ouida St.         | E-1   | 2019       | 2009-ARRA | 2009 | 2022-07-15 | 1984     | 2002    | 2006     | 2016-11-23 |            | 2002    | 2005       |
| 55 Ouida St.         | E-2   | 2019       | 2009-ARRA | 2009 | 2011-05-26 | 1984     | 2002    | 2006     |            | 2022-03-23 | 2002    | 2005       |
| 55 Ouida St.         | E-3   | 2019       | 2009-ARRA | 2009 | 2019-12-06 | 1984     | 2002    | 2006     |            |            | 2002    | 2005       |
| 55 Ouida St.         | F-1   | 2019       | 2009-ARRA | 2009 | 2015-05-12 | 1984     | 2002    | 2006     |            |            | 2002    | 2005       |
| 55 Ouida St.         | F-2   | 2019       | 2009-ARRA | 2009 | 2011-03-01 | 1984     | 2002    | 2006     |            |            | 2002    | 2005       |
| 55 Ouida St.         | F-3   | 2019       | 2009-ARRA | 2009 | 2013-01-13 | 1984     | 2002    | 2006     |            |            | 2002    | 2005       |

| 30 Ouida St. Address | Apt # | S.Detector | Roofs | HVAC | W.H.       | Flooring | Kitchen | Bathroom | Range      | Refrig.    | Windows | Insulation |
|----------------------|-------|------------|-------|------|------------|----------|---------|----------|------------|------------|---------|------------|
| 30 Ouida St.         | H-1   | 2019       | 2012  | 2009 | 2010-07-07 | 1984     |         | 2006     |            |            | 2002    | 2005       |
| 30 Ouida St.         | H-2   | 2019       | 2012  | 2009 | 2023-05-02 | 1984     |         | 2006     |            |            | 2002    | 2005       |
| 30 Ouida St.         | H-3   | 2019       | 2012  | 2009 | 2017-09-01 | 2017     |         | 2006     | 2016-12-16 |            | 2002    | 2005       |
| 30 Ouida St.         | H-4   | 2019       | 2012  | 2023 | 2008-12-30 | 1984     |         | 2006     |            |            | 2002    | 2005       |
| 30 Ouida St.         | I-1   | 2019       | 2019  | 2009 | 2012-04-28 | 1984     |         | 2006     |            |            | 2002    | 2005       |
| 30 Ouida St.         | I-2   | 2019       | 2019  | 2009 | 2006-06-01 | 1984     |         | 2006     |            |            | 2002    | 2005       |
| 30 Ouida St.         | I-3   | 2019       | 2019  | 2009 | 2018-01-29 | 1984     |         | 2006     |            |            | 2002    | 2005       |
| 30 Ouida St.         | I-4   | 2019       | 2019  | 2009 | 2022-04-07 | 1984     |         | 2006     |            |            | 2002    | 2005       |
| 30 Ouida St.         | J-1   | 2019       | 2019  | 2009 | 2015-01-22 | 1984     | 2002    | 2006     |            | 2017-03-22 | 2002    | 2005       |
| 30 Ouida St.         | J-2   | 2019       | 2019  | 2009 | 2014-04-13 | 1984     | 2002    | 2006     |            |            | 2002    | 2005       |
| 30 Ouida St.         | K-1   | 2019       | 2019  | 2009 | 2011-10-04 | 1984     |         | 2006     | 2020-02-13 |            | 2002    | 2005       |
| 30 Ouida St.         | K-2   | 2019       | 2019  | 2009 | 2014-11-20 | 1984     |         | 2006     |            |            | 2002    | 2005       |
| 30 Ouida St.         | K-3   | 2019       | 2019  | 2009 | 2011-05-23 | 1984     |         | 2006     |            |            | 2002    | 2005       |
| 30 Ouida St.         | L-1   | 2019       | 2019  | 2009 | 2015-03-11 | 1984     |         | 2006     |            |            | 2002    | 2005       |
| 30 Ouida St.         | L-2   | 2019       | 2019  | 2009 | 2009-10-14 | 1984     |         | 2006     |            |            | 2002    | 2005       |
| 30 Ouida St.         | L-3   | 2019       | 2019  | 2009 | 2017-02-28 | 1984     |         | 2006     | 2022-07-19 |            | 2002    | 2005       |



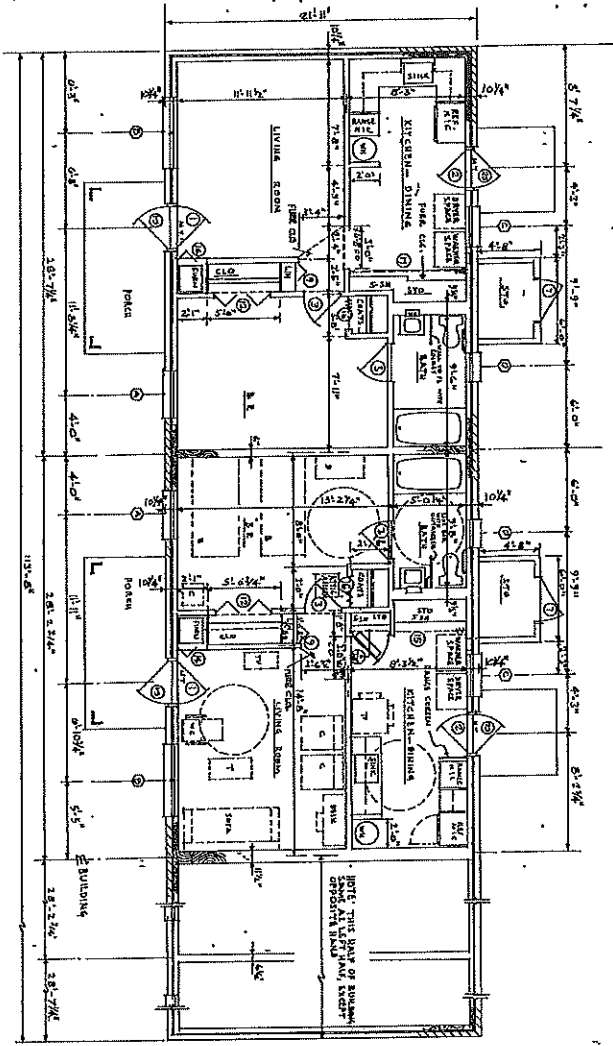
Housing Authority of the City of Blue Ridge - GA06RD00062  
 1980's Site - 002 = 463 Industrial Blvd, 55 Ouida St. and 30 Ouida St. Locations

1-Bdrm. Apartment Floor Plan - "TYPE A/E" = 638 SQ. FT.  
 (4) Apartments  
 Quadrangle  
 (2) Structures



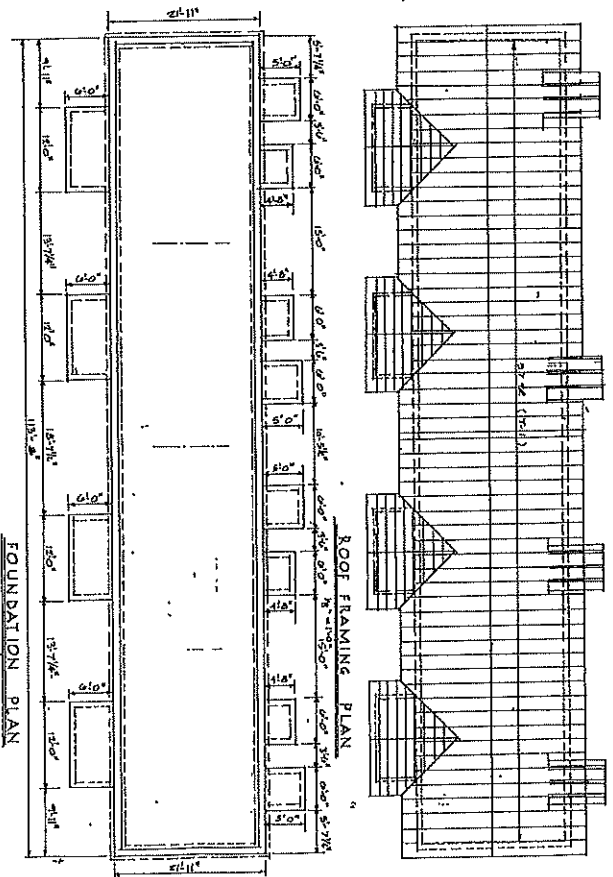
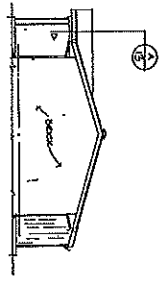
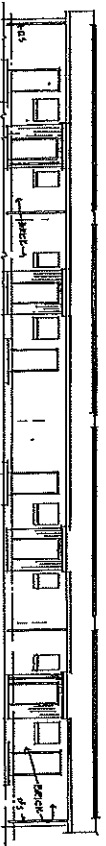
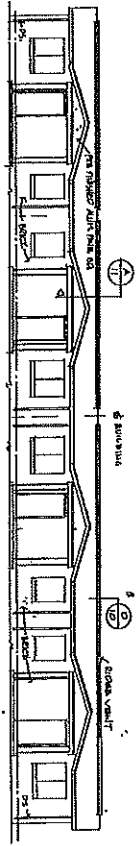
FLOOR PLAN - A/E BUILDING

1/4" = 1'-0"

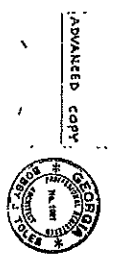
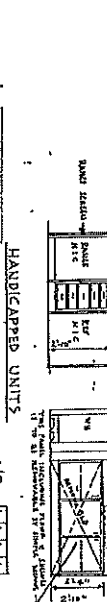
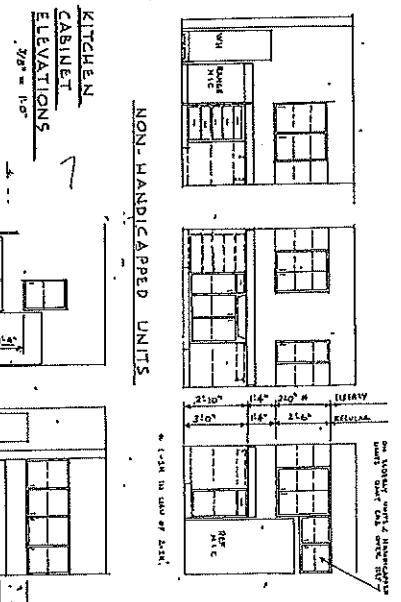


**FLOOR PLAN - A/E BUILDING**

NOTE: THE MAIN ENTRANCE IS ON THE RIGHT SIDE OF THE BUILDING.



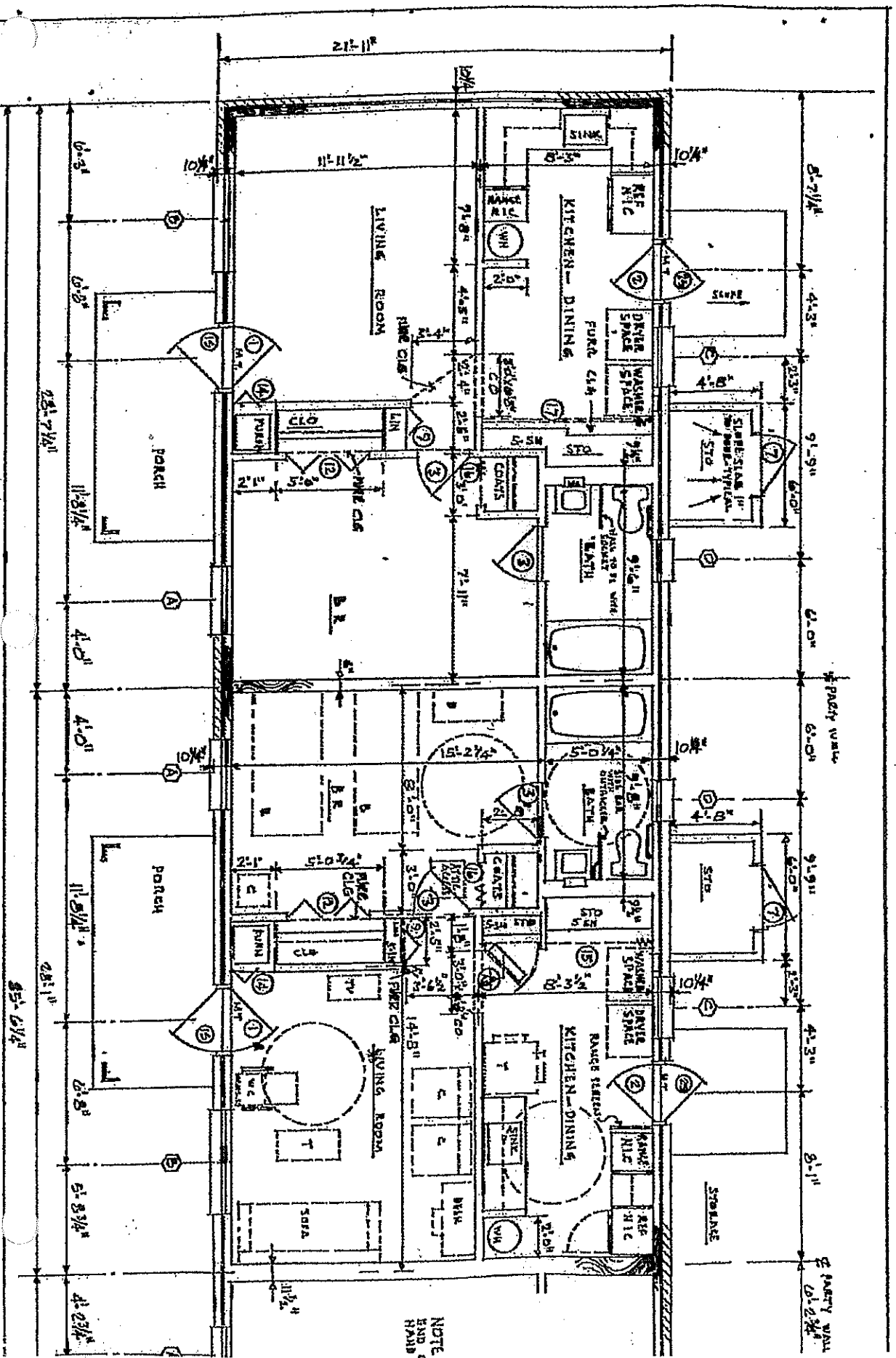
**FOUNDATION PLAN**



UNIVERSITY MICROFILMS  
SERIALS ACQUISITION CENTER  
300 NORTH ZEEB ROAD  
ANN ARBOR, MI 48106  
6-24 11  
Bobby J. Toles  
ARCHITECT, INC.  
410 UNIVERSITY DRIVE  
ANN ARBOR, MI 48106  
A-1

Housing Authority of the City of Blue Ridge - GA06RD00062  
 1980's site - 002 - 463 Industrial Blvd, 55 Ouida St. and 30 Ouida St. Locations

1-Bdrm. Apartment Floor Plan - "TYPE B/E" = 638 SQ. FT.  
 (6) Apartments  
 Triplex  
 (2) Structures



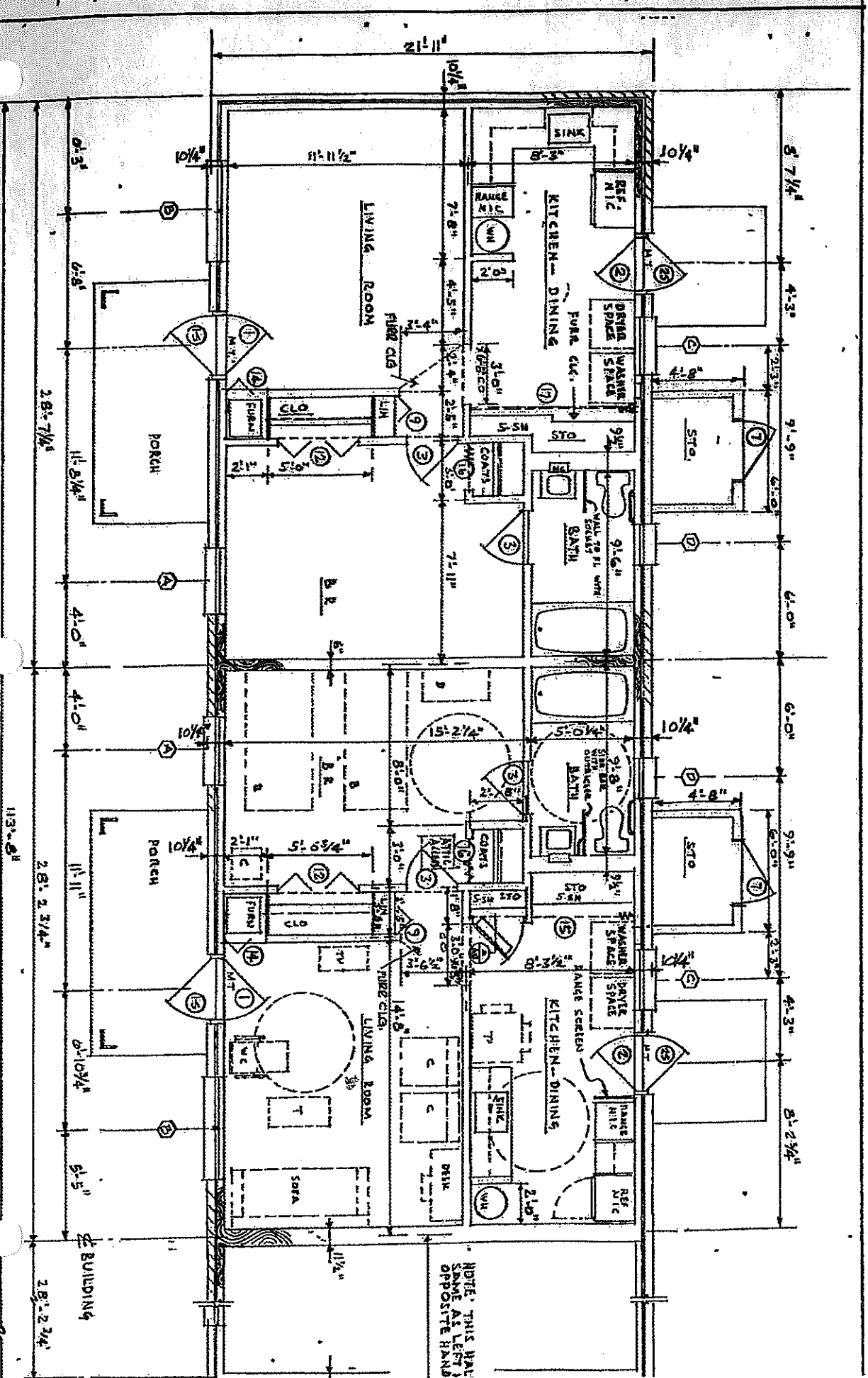
NOTE:  
 HARD HARD



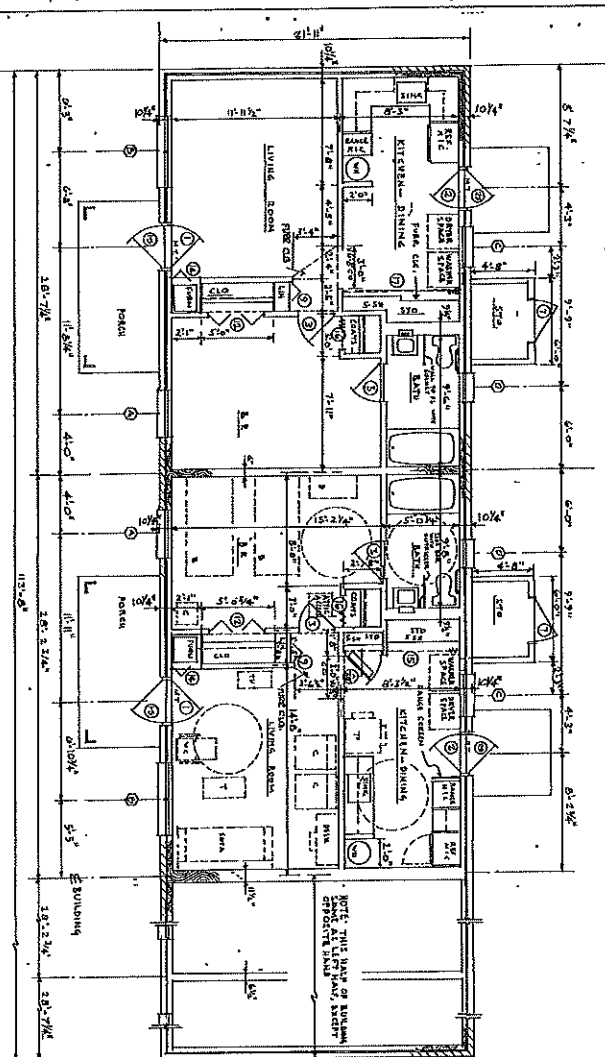


Housing Authority of the City of Blue Ridge - GA06RD00062  
 1980's Site - 002 = 463 Industrial Blvd., 55 Ouida St. and 30 Ouida St. Locations

1-Bdrm. Apartment Floor Plan - "TYPE C" = 638 SQ. FT.  
 (4) Apartments  
 (1) Structures

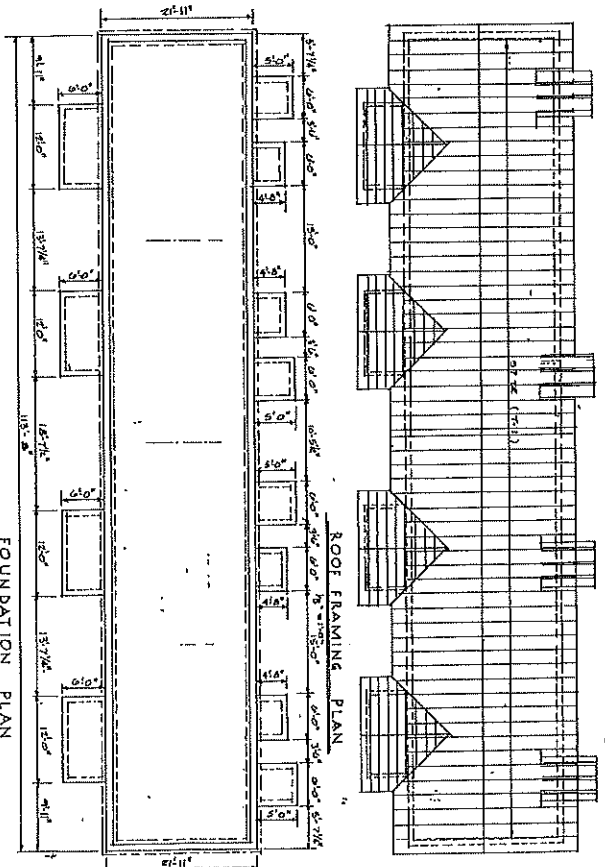




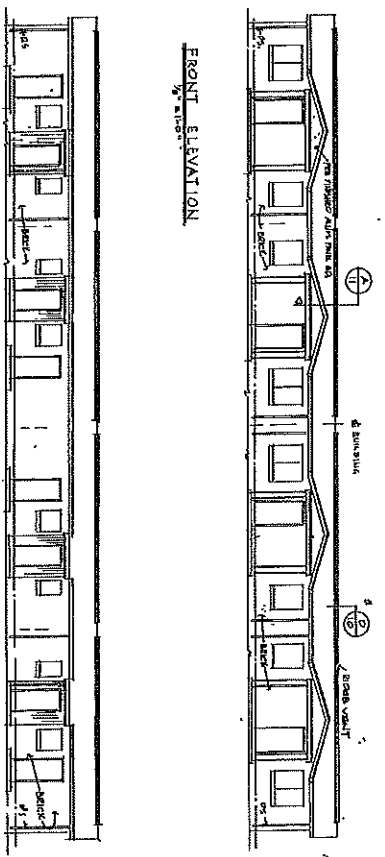


FLOOR PLAN - A/E BUILDING

NOTE: C BUILDING IS SAME AS A/E BUILDING EXCEPT IT IS REARLAND TYPE



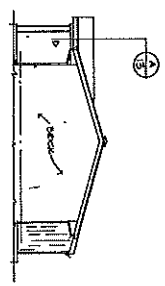
FOUNDATION PLAN



FRONT ELEVATION

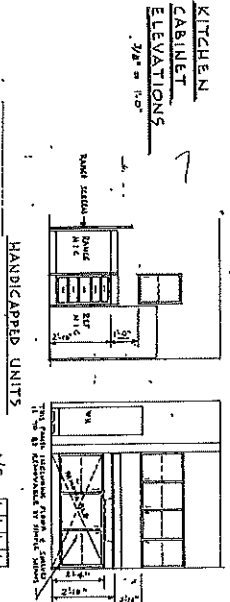


REAR ELEVATION

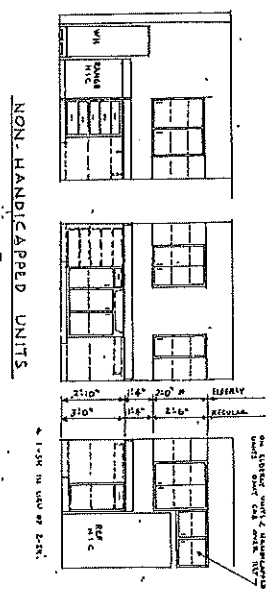


RIGHT ELEVATION

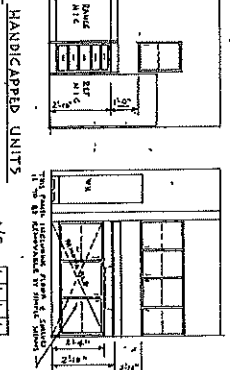
NOTE: THIS ELEVATION IS SUBJECT TO ALL LOCAL AND STATE SPECIFICATIONS



KITCHEN CABINET ELEVATIONS



NON-HANDICAPPED UNITS



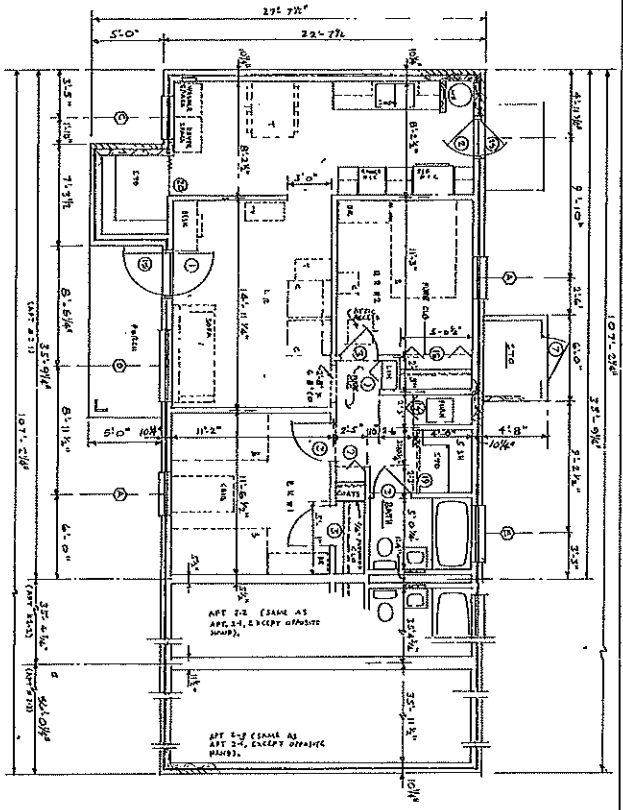
HANDICAPPED UNITS

ADVANCED COPY

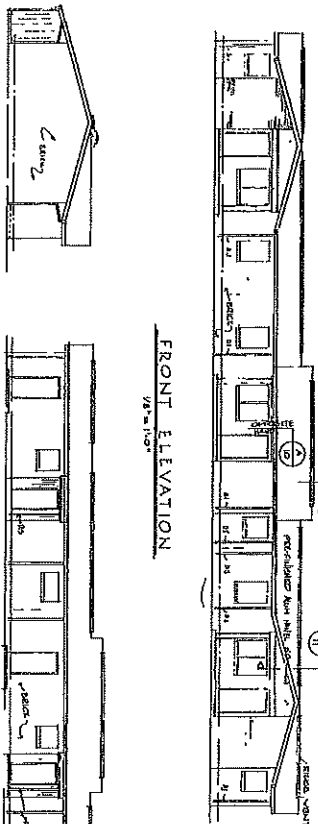


BOBBY J. TOLES ARCHITECT, INC.  
 1111 W. 10th St., Suite 100  
 Oklahoma City, Oklahoma 73106  
 (405) 241-1111





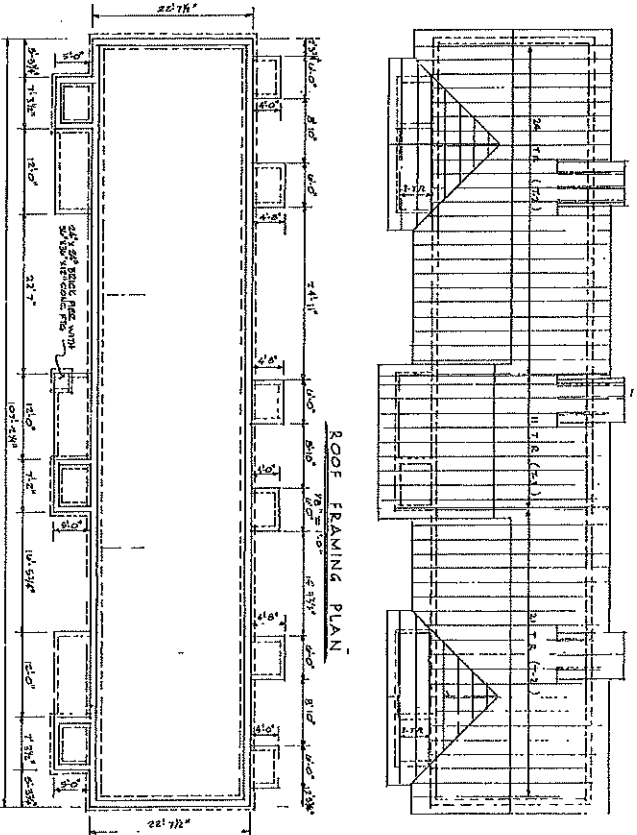
FLOOR PLAN - D BUILDING  
1/8" = 1'-0"



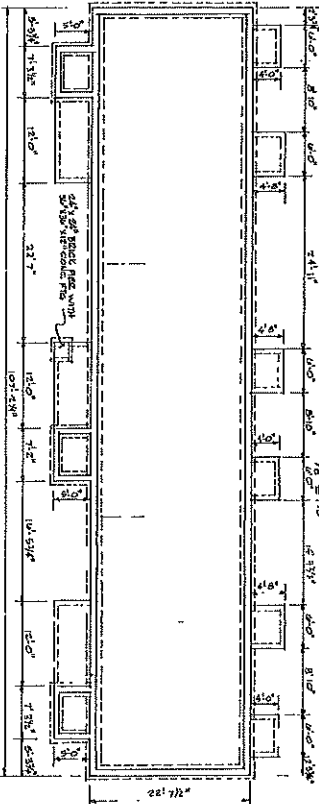
LEFT END ELEVATION  
7'-0" = 1'-0"

FRONT ELEVATION  
7'-0" = 1'-0"

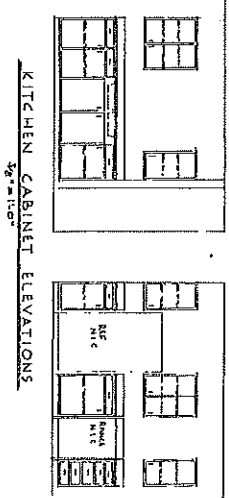
REAR ELEVATION  
17'-0" = 1'-0"



ROOF FRAMING PLAN  
1/8" = 1'-0"



FOUNDATION PLAN  
1/8" = 1'-0"



KITCHEN CABINET ELEVATIONS  
1/8" = 1'-0"

ADVANCED COPY

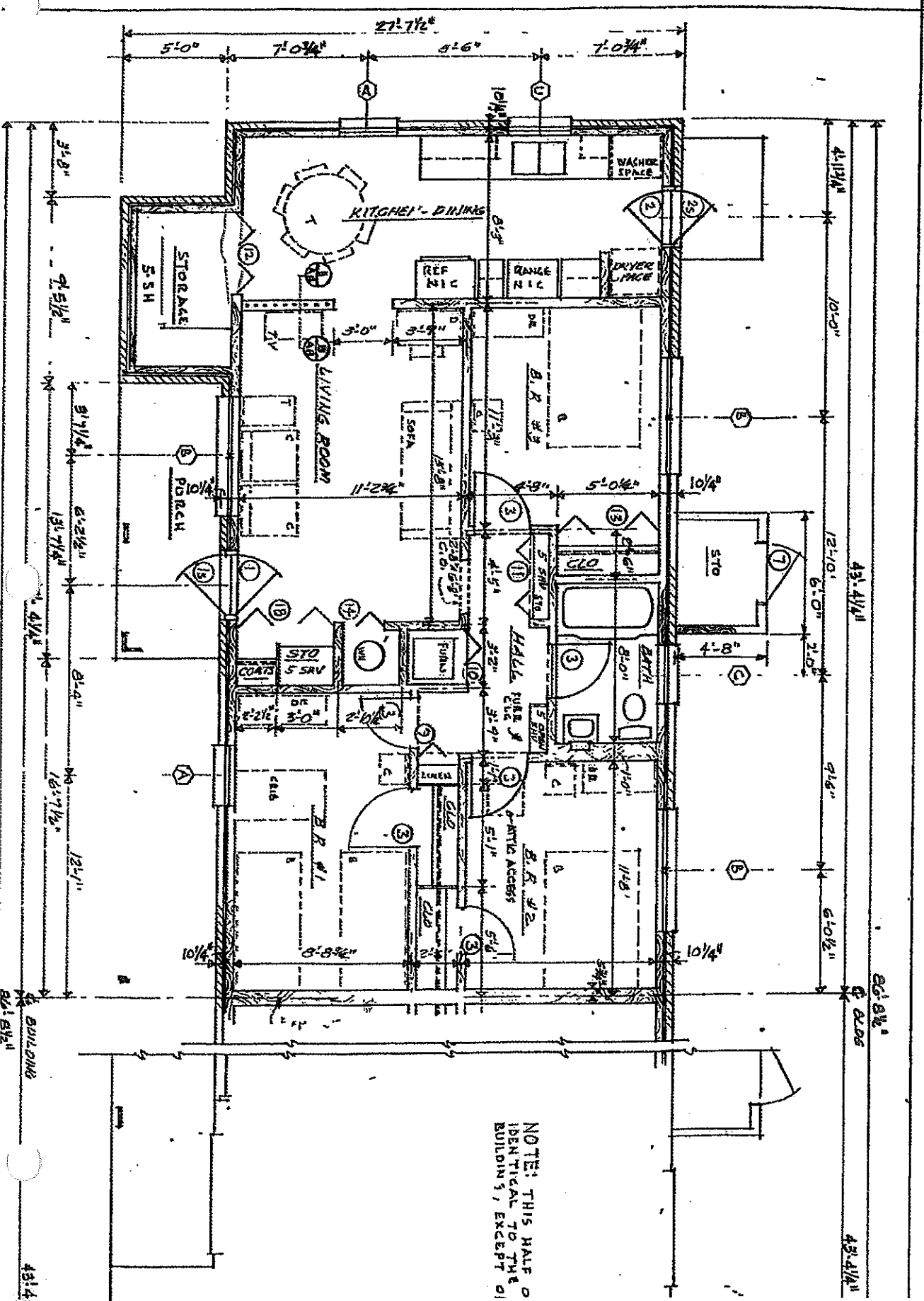
2 | 2 | 2



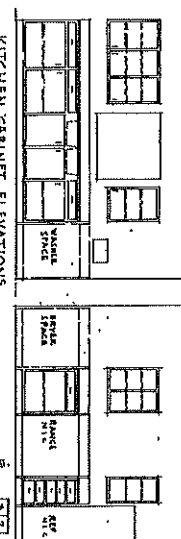
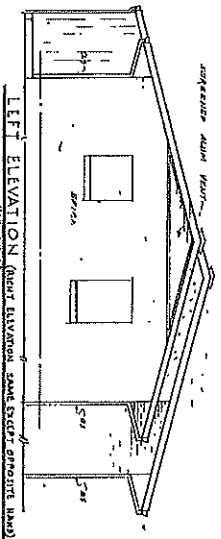
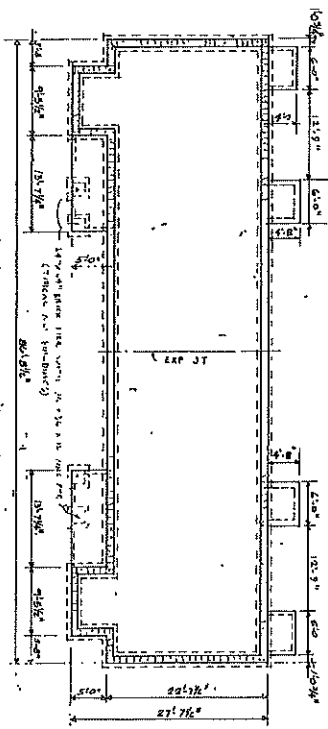
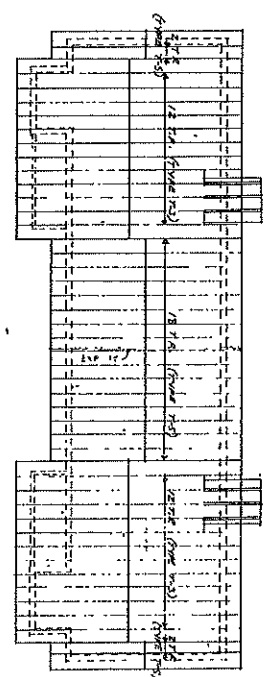
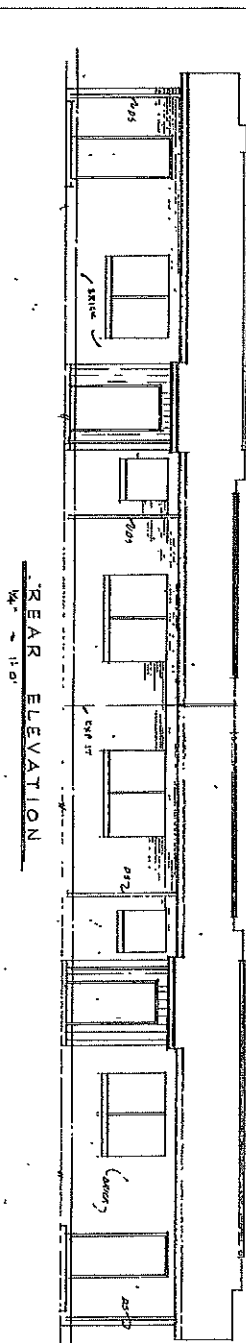
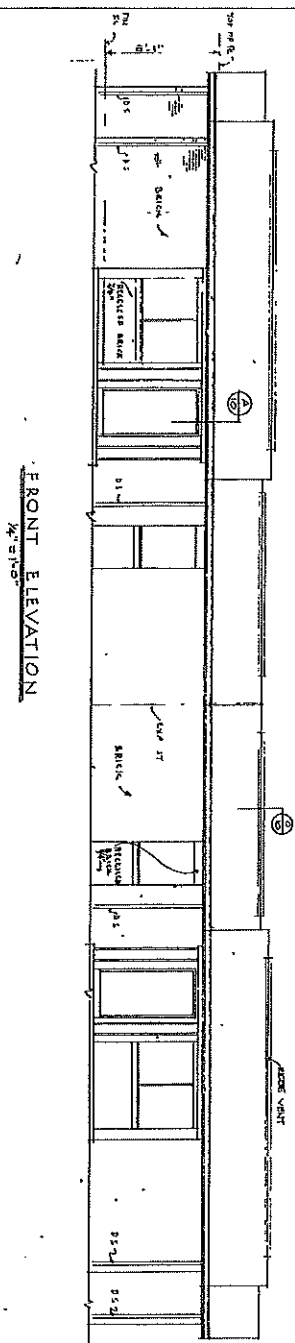
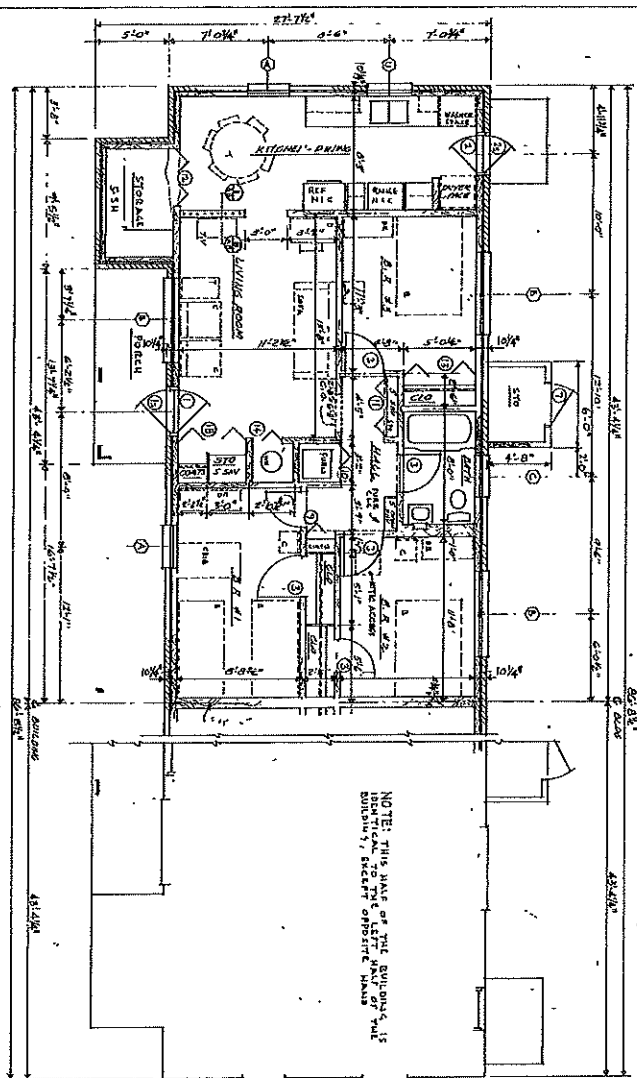
THE SOUTH CAROLINA REGISTERED ARCHITECTS  
THE BOARD OF ARCHITECTS OF THE STATE OF  
SOUTH CAROLINA  
ROBERT J. TOLES  
ARCHITECT, INC.  
1077 JEFFERSON AVE. COLUMBIA, SOUTH CAROLINA 29201  
A3

Housing Authority of the City of Blue Ridge - GA06RD00062  
 1980's Site - 002 = 463 Industrial Blvd., 55 Ouida St. and 30 Ouida St. Locations

3-Bdrm. Apartment Floor Plan - "TYPE E" = 1,204 SQ. FT.  
 Duplex  
 (6) Apartments  
 (3) Structures



NOTE: THIS HALF OF IDENTICAL TO THE BUILDING, EXCEPT O



ADVANCED COPY

ROBBY J. TOLED ARCHITECT, INC.

1000 NORTH CENTRAL AVENUE, SUITE 100, DENVER, CO 80202

PHONE: 303.733.1111

FAX: 303.733.1112

WWW.RJTOLED.COM

DATE: 10/1/01

PROJECT: 1000 NORTH CENTRAL AVENUE, SUITE 100, DENVER, CO 80202

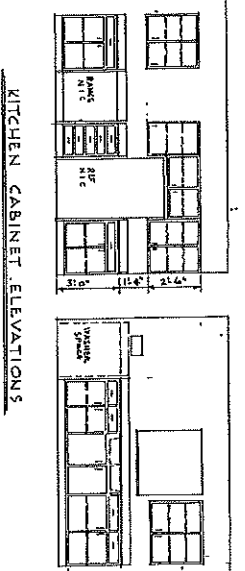
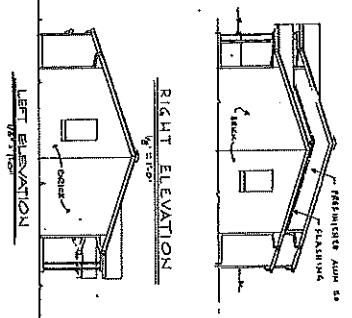
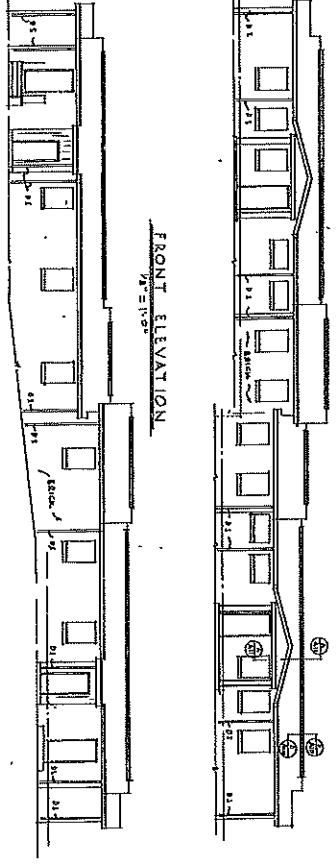
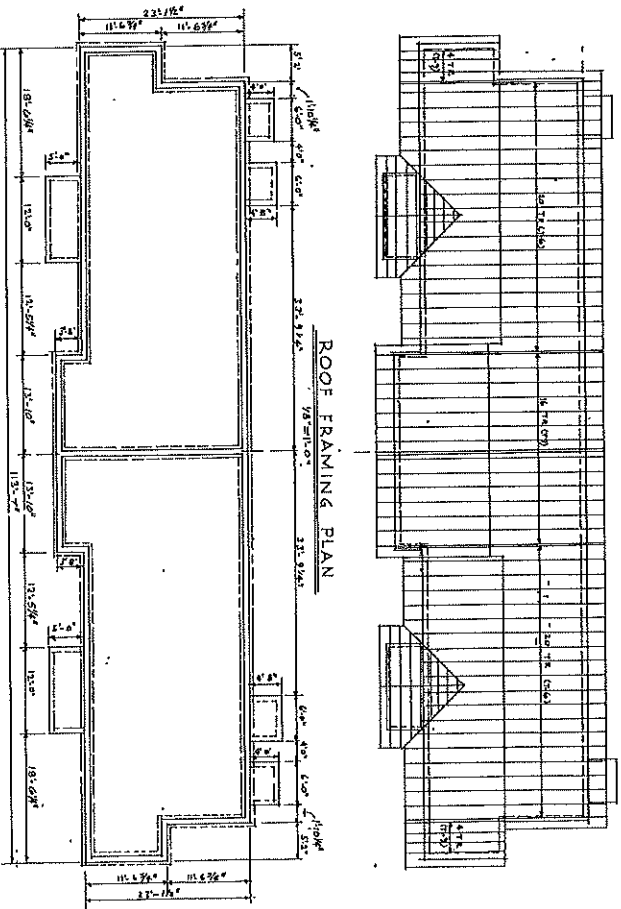
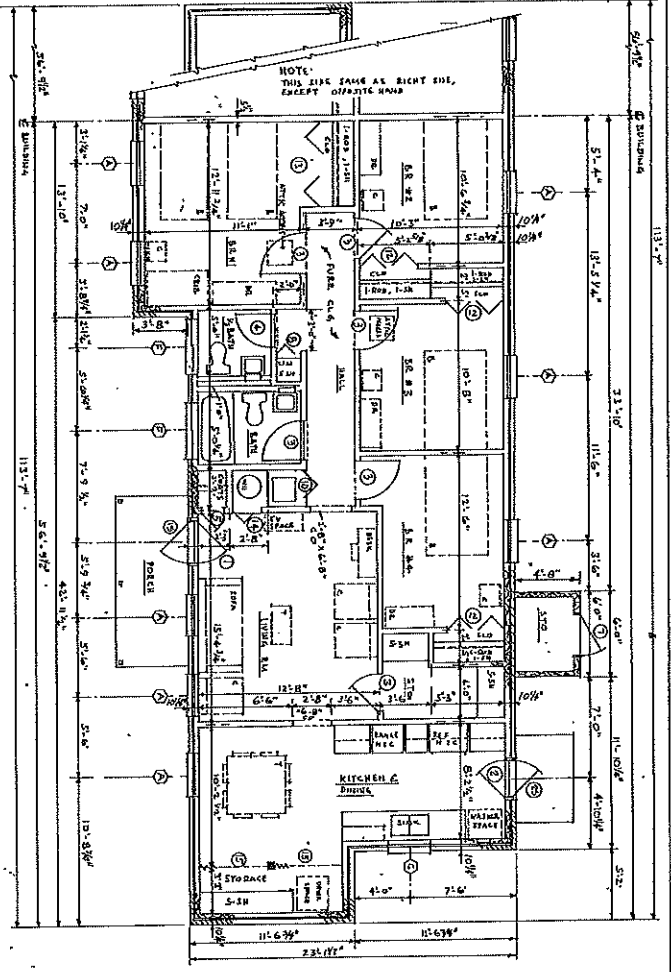
SCALE: 1/8" = 1'-0"

NO. 1000 NORTH CENTRAL AVENUE, SUITE 100, DENVER, CO 80202

1000 NORTH CENTRAL AVENUE, SUITE 100, DENVER, CO 80202







**FOUNDATION PLAN**  
1/8" = 1'-0"



UNIVERSITY MICROFILMS  
SERIALS ACQUISITION  
300 N ZEEB RD  
ANN ARBOR MI 48106  
616 763 0900  
COURTESY OF  
**BOBBY T. TOLES**  
ARCHITECT, INC.  
417 WASHINGTON ST. SUITE 100  
ANN ARBOR MI 48106  
A-5

ADVANCED COPY # 4/4